

Protocol on the relationships between the Southend Safeguarding Vulnerable Adults and Local Children’s Safeguarding Boards, and other Strategic Boards/Partnerships in Southend

1. Purpose

1.1 This document sets out the relationship between Southend Local Safeguarding Children Board (LSCB) and Southend Safeguarding Vulnerable Adults Board (SVAB) and the following strategic partnership boards:

- Health and Wellbeing Board (HWB)
- Success for all Children Group (SACG)
- Corporate Parenting Group (CPG)
- Community Safety Partnership (CSP)

1.2 The aim of the protocol is also to set out the role and responsibilities of these strategic boards with regards to safeguarding.

2. Introduction

2.1 The LSCB is a statutory body created under the Children Act 2004. It is responsible for challenging all relevant organisations on their performance in ensuring that children and young people are kept safe and are free from abuse in Southend. The LSCB is responsible for coordinating and monitoring the safeguarding of children and promoting their welfare.

2.2 The SVAB is not currently a statutory body, but will become so in April 2015 - or once the Care Bill is enacted. It is possible that new Safeguarding arrangements will be implemented in 2014 subject to Department of Health guidance. The SVAB is responsible for ensuring that all organisations providing or commissioning services for vulnerable adults in Southend work in a coordinated way, safeguarding and protecting adults from abuse.

2.3 The terms of reference of the SVAB and LSCB are attached.

2.4 The HWB is a statutory body. It has ‘whole systems’ responsibility for improving the health and wellbeing of Southend’s population and reducing inequalities in health and wellbeing. The Board also has responsibility for driving and shaping strategic commissioning aimed at delivering improved health and wellbeing and reduced inequalities in health and wellbeing.

2.5 The SVAB and LSCB are not sub-committees of the HWB. Whilst the work of the safeguarding boards contribute to the wider goal of

improving the wellbeing of all adults, children and young people, they have a focus on protecting adults and children from harm by providing leadership, ownership and co-ordination of multi-agency working at a local level, reducing the risk of abuse and neglect. For Safeguarding Boards to be effective, they must remain independent.

- 2.6 The Chair of the LSCB will be invited to attend the HWB annually to present the LSCB's annual report on the effectiveness of safeguarding children in Southend. The HWB will ensure that the Police and Crime Commissioner is present at this meeting.
- 2.7 The LSCB will wish to gain assurance that the HWB is effectively considering Children's Safeguarding in the decisions it makes. It may wish to see evidence of this through scrutiny of HWB decisions. The HWB will want to use the LSCB as a critical friend and seek its input in to items being considered and decisions to be made. Examples include the development of the Health and Wellbeing Strategy, the Joint Strategic Needs Assessment, key Commissioning Strategies, and service re-design.
- 2.8 In Southend, the LSCB has a direct relationship with the Success for all Children Group (SACG) and the Corporate Parenting Group (CPG). The SACG and CPG report to the HWB and have responsibility for shaping and delivering children and young people's and looked after children's health and wellbeing agenda. The LSCB holds the SACG and CPG to account for ensuring the safeguarding of children and looked after children are considered in the decisions it makes and its strategic priorities. The SACG and CPG will report on performance against their safeguarding children and looked after children priorities at least once annually to the LSCB.
- 2.9 The SVAB will have a direct and on-going relationship with the HWB. The Chair of SVAB will be invited to attend the HWB annually to present the SVAB's annual report on the effectiveness of safeguarding vulnerable adults in Southend. The HWB will ensure that the Police and Crime Commissioner is present at this meeting.
- 2.10 The SVAB will want to seek assurance that the HWB are appropriately considering adult safeguarding in the decisions it makes. It may wish to see evidence of this through scrutiny of HWB decisions. The HWB will want to use the SVAB as a critical friend and seek its input in to items being considered and decisions to be made. Examples include the development and implementation of the Health and Wellbeing Strategy, the Joint Strategic Needs Assessment, key Commissioning Strategies, and service re-design.
- 2.11 Both Safeguarding Boards produce annual reports. The findings of the reports and identified priorities for the following year should be considered and built in to the development of the Health and Wellbeing Strategy and its annual delivery plans.

- 2.12 Both Safeguarding Boards will have a direct relationship with the Community Safety Partnership (CSP). The Safeguarding Boards will want to seek assurance that the CSP is appropriately considering adult and children's safeguarding in the decisions it makes. The Boards will specifically want to seek assurance regarding the development and implementation of the Domestic Abuse Strategy and the implementation of lessons learned from domestic homicide reviews.

3. Evaluation and review

- 3.1 If there are any areas of significant concern that cannot be resolved in accordance with this Protocol, then a meeting will be held between the Safeguarding Board Chair, Chair of the HWB, and the Director for People. Other persons will be invited as required.
- 3.2 This protocol should be reviewed by the Safeguarding Boards, the HWB, and the CSP on an annual basis.

4. Operational Arrangements

- 4.1 This protocol will be implemented operationally as follows:
- The minutes and agendas of meetings will be shared between the Boards and strategic partnerships;
 - Safeguarding Board input in to the Joint Strategic Needs Assessment – e.g. analysis of safeguarding in the local area;
 - Health and Wellbeing Board annual report to include its safeguarding arrangements and any issues relating to safeguarding that have been raised by or highlighted to the Board during the course of the year;
 - Both SVAB and LSCB to present their annual reports to the HWB and include identification of any actions for the HWB;
 - SVAB to present its Annual Strategic Plan to the HWB prior to sign-off, allowing the HWB to input in to the Plan (LSCB will present its Annual Plan through the SACG arrangements);
 - Safeguarding Board involvement in the development of the Health and Wellbeing Strategy and delivery plans – including evaluation of the impact of the HWB Strategy on safeguarding;
 - Cross-board/partnership communication and engagement in priority setting;
 - Arrangements for cross-Board scrutiny and challenge put in place; and
 - Consideration of Safeguarding Board views in items and issues as they arise and as appropriate.
 - Quarterly reports from the CSP's Domestic Abuse Forum to the Safeguarding Boards on the development and implementation of the Domestic Abuse Strategy and the implementation of lessons learned from domestic homicide reviews

5. Public Engagement

- 5.1 The wider public have an important role to play in keeping children and young people and adults safe and healthy. Although members of the HWB, SVAB and LSCB are formally accountable to different parts of the partnership system, collectively they have a shared responsibility for developing and contributing to the delivery of the Joint Health and Wellbeing Strategy. Citizen involvement including the views of children and young people should be integral to the strategic boards and be everyone's business.
- 5.2 HealthWatch has a fundamental role in engaging with the public and for flagging up issues of concern – including safeguarding concerns. HealthWatch is a full member of Southend Health and Wellbeing Board. HealthWatch is also represented on the NHS Quality Surveillance Group (via HealthWatch Essex acting on behalf of all three HealthWatch organisations in Essex, Thurrock and Southend) and the SVAB.

6. Signatories

Rob Tinlin, Chief Executive, Southend Borough Council

..... Date

Simon Leftly, Corporate Director for People, Southend Borough Council

.....Date

Christine Doorly, Chair, Southend LSCB and SVAB

..... Date

Cllr L Salter, Chair, Southend Health and Wellbeing Board

..... Date

Southend Strategic Boards/Partnerships Safeguarding Protocol – Item 6.1

Supt. Luke Collison, Chair, Southend Community Safety Partnership

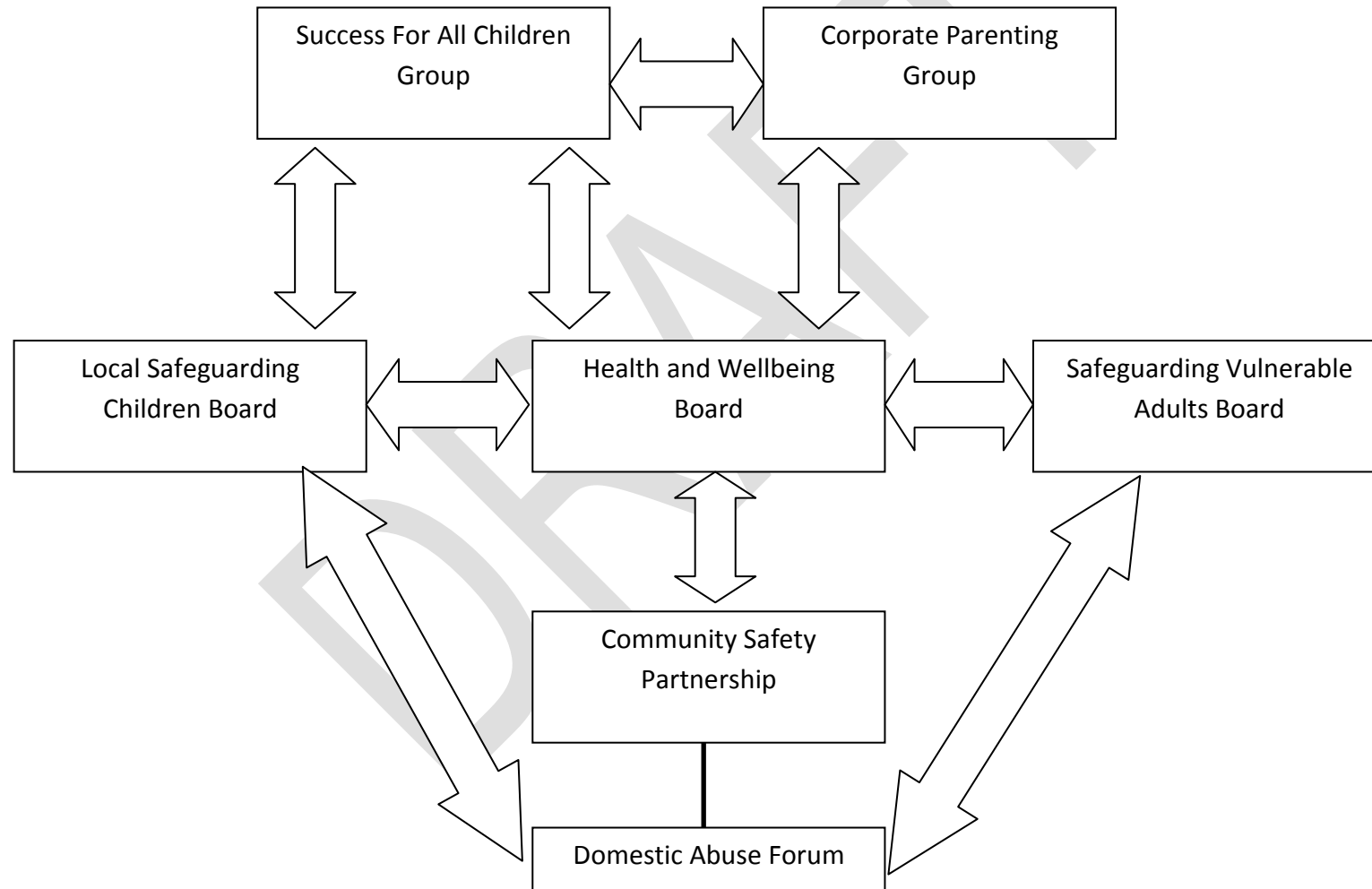
..... Date

Sue Hadley, Chair, Southend Corporate Parenting Group

..... Date

DRAFT

LSCB & SVAB, Strategic Boards and Partnerships Safeguarding Protocol



DRAFT